



# Why Partner with Lacey MakerSpace?

## Build Your Workforce Pipeline

Train skilled workers on the equipment your business utilizes, which can help lower recruitment costs and reduce onboarding time.

## Access Innovation Tools

Bypass costly equipment purchases by utilizing our prototyping services for your R&D projects at a fraction of traditional expenses.

*"I have been able to increase my value as an employee by broadening my relevant skills."*

*- MakerSpace Member*

## Connect with 400+ Regional Innovators

Network with makers, entrepreneurs, and businesses to discover partners, vendors, and collaboration opportunities.

*"My company's first device would not have been as far along without LMS!"*

*-Founder, Somatic VR*

## Strengthen Your Team

Create custom workshops that enhance innovation skills your business can implement right away.

## Lead Your Community

By visibly supporting workforce development, your organization positions itself as a progressive community partner. Your investment nurtures an innovative workforce and economic ecosystem that drives regional business success.

### The Lacey MakerSpace In Numbers



**400+**

350 makers (and growing!)  
across six counties

**46%**

Student, Veteran, &  
Tribal Members

**29**

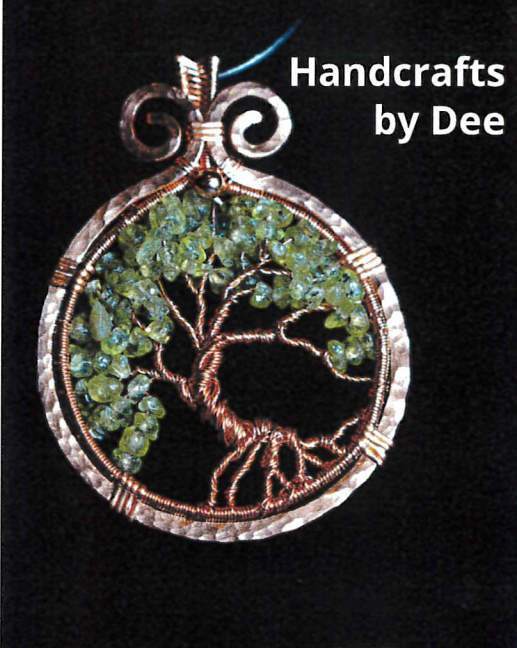
Classes & workshops  
offered monthly)

**200**

Average Volunteer  
Hours Worked Monthly

**100+**

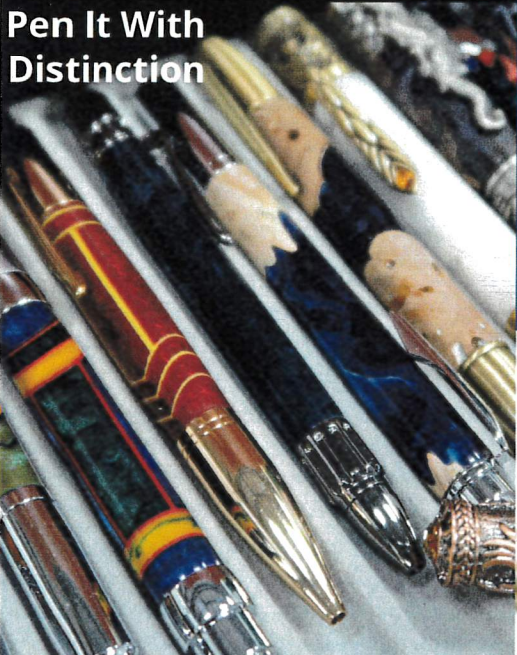
Regional Business Connections



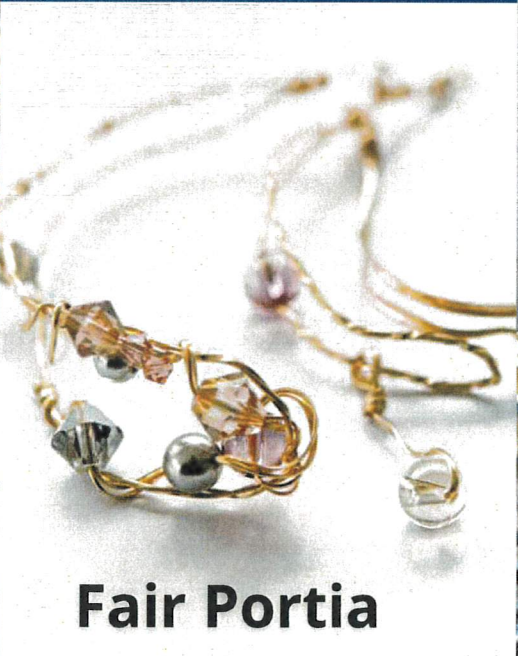
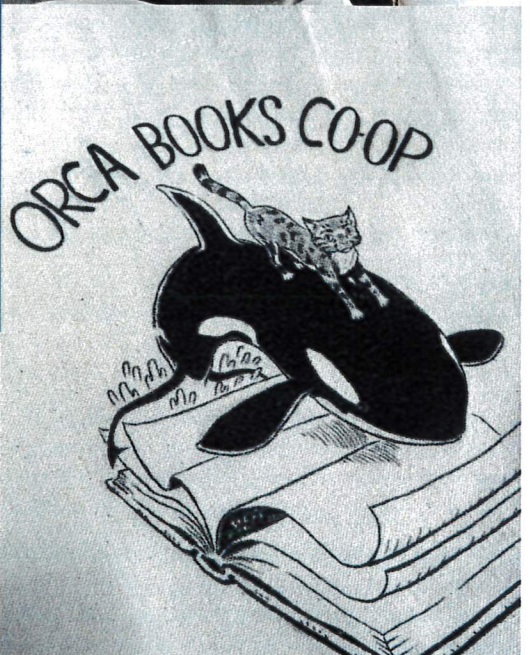
Handcrafts by Dee

**Lacey**  
MakerSpace

**Businesses we work with**



Pen It With Distinction



Fair Portia



Solace Glass Studio

## Lacey MakerSpace Officials Prioritize Educating the Next Generation in Local Schools and Colleges

---

Other special opportunities through Lacey MakerSpace are their workforce initiatives and school programming. Workforce initiatives support prototyping innovations as well as skill-building opportunities for employees. The MakerSpace is committed to supporting academic pathways at both local schools and colleges, ensuring that students can maintain and grow their skills through hands-on, real-world experience. This includes working with high school robotics teams, where students gain practical experience while contributing to community-focused projects.

One such program is the Adaptathon. A partnership between local high school robotics teams and the [Sensory Tool House](#), at least once a year, students gather at the MakerSpace to creatively adapt toys and devices for individuals with limitations. The Lacey MakerSpace is also partnering with Thurston Public Works on their second community [Fix-It Fair](#) on April 16, 2025, and will be part of the [South Sound Studio Tour](#) on May 17.

To do such amazing work within the community, the Lacey MakerSpace maintains relationships with key partners, Pope explains. These include the [Thurston EDC](#), [Saint Martin's University](#) and the [City of Lacey](#).

“We serve as a hub alongside other resources in the region like the [Southwest Washington Regional Agricultural Business & Innovation Park](#) and the [Tumwater Craft District](#), supporting regional economic and cultural vitality,” says Pope. “Additionally, we frequently collaborate with organizations in the creative economy, like anchor partners of Olympia’s new [Armory project](#), [Arbutus Folk School](#), [OlyMEGA](#), and [Timberland Regional Library](#). All these amazing collaborations help us expand our impact and foster a dynamic, interconnected community.”

Want to keep up with all that’s going on at the Lacey MakerSpace? You can follow them on [Facebook](#), [Instagram](#) and [YouTube](#). For the most up-to-date class info, Pope recommends following them on [Eventbrite](#) or by checking the [website](#). You can also sign up for a [Saturday morning tour](#) to get an in-depth look at the space and its offerings. Submit questions [online](#) and the team will be happy to get back to you.

**Lacey MakerSpace**  
**Saint Martin’s University Campus**  
Zaverl Hall – Building 5  
Baran Drive SE, Lacey  
360.339.4205

*Sponsored*

# Milestones

October  
2019

**Lacey  
MakerSpace**  
Opens its doors!

Partnered in producing 17K+ protective masks and face shields for frontline workers in early days of COVID-19

Summer  
2020

September  
2021

Awarded \$1.1M EDA CARES Act grant for advanced manufacturing equipment and workforce training

City of Lacey secures \$1M federal appropriation for LMS upgrades and expansion

December  
2021

January  
2022

Design/construction begin on major facility expansion

Secured \$100K Ben B. Cheney Foundation grant to support expansion

March  
2022

March  
2022

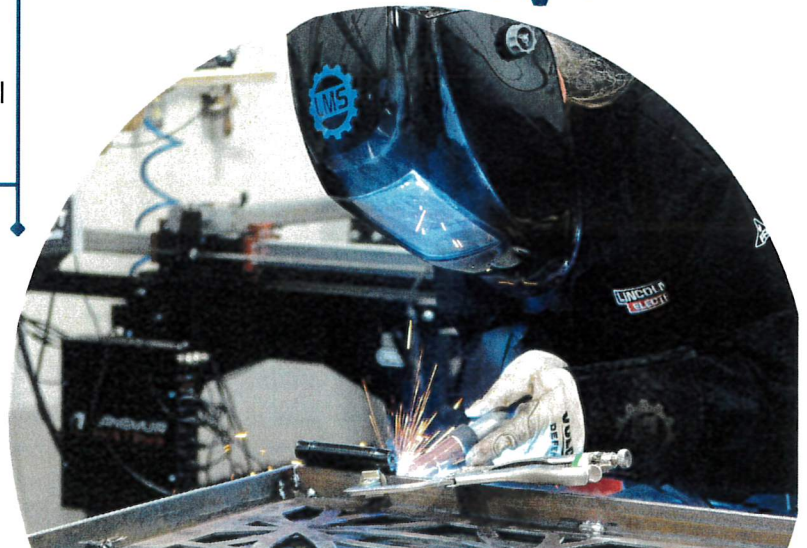
**Expansion complete!**  
8,000 sq ft facility enhances capacity to serve regional workforce development needs

LMS Awarded WA Dept of Commerce "Governor's Smart Communities" Award

November  
2024

Summer  
2025

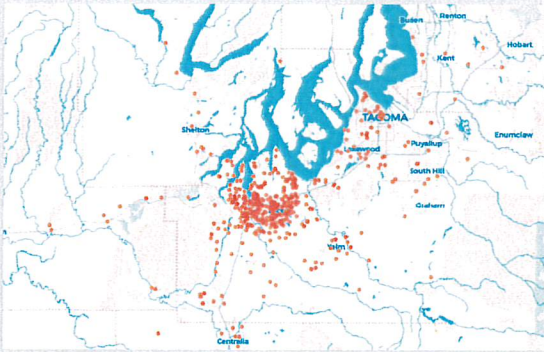
Growing strategic regional partnerships, including AJAC, Port of Olympia, Dragonwheel Investment Group, Sensory Tool House and others



# KEY METRICS REPORT - 2025

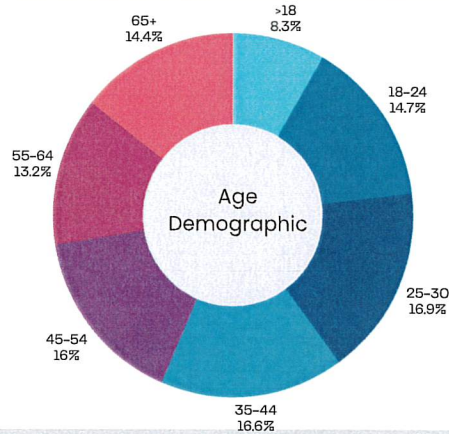


## Membership and Volunteer Report



Over 360 Members from 43 cities, spanning from Seattle to Portland. Nearly half of our members being Students, Veterans or Tribal Members.

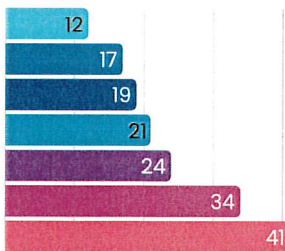
Metric	EOY 2024	YTD 2025
Volunteer Hours	1160	1640
Total Volunteers	34	44
Total Memberships	275	362
Classes Offered	156	276



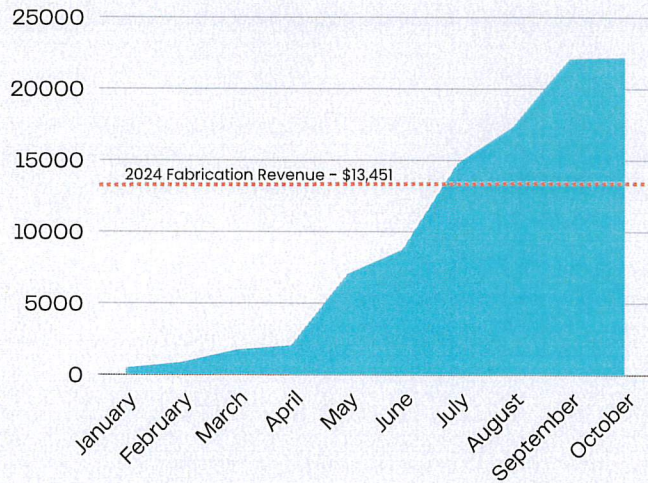
## Business Collaboration Report

### Local Business by the Numbers

- Business Membership Pack...
- Sponsor/Investor
- Special Events
- Suppliers
- Collaborator
- Member Owned Businesses
- Fabrication Clients



### Fabrication Revenue YTD



On track to nearly **double** 2024 Fabrication Revenue!