




NAVAL BASE KITSAP

SERVING THE FLEET, FIGHTER,
AND FAMILY



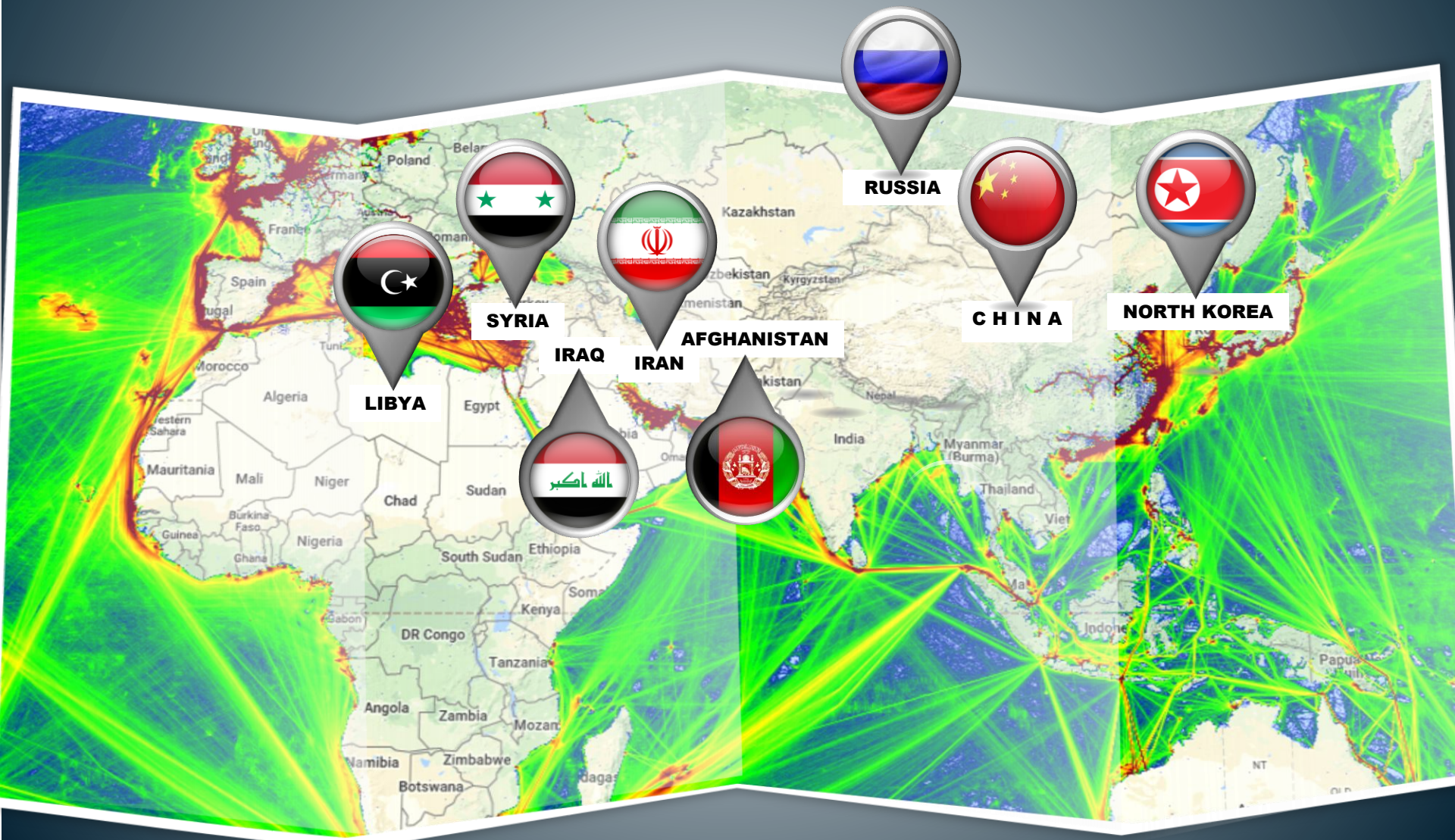
AMERICA'S NAVY OUR ENDURING MISSION

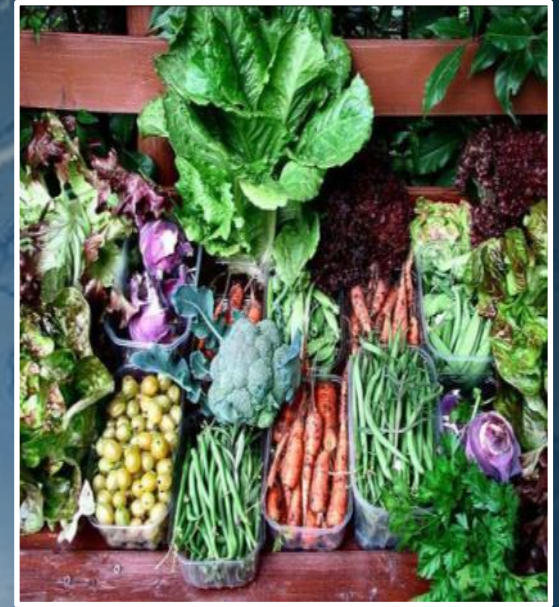


“The Navy maintains, trains and equips combat-ready military forces capable of winning wars, deterring aggression, and maintaining freedom of the seas.”

-Adm. John Richardson, Chief of Naval Operations

MARITIME ROUTES & CROSSROADS





26%

**OF U.S. JOBS
ARE TIED TO
GLOBAL TRADE**

26%

**OF U.S.
MANUFACTURING
JOBS DEPEND
ON EXPORTS**

22%

**OF U.S.
AGRICULTURE
PRODUCTS ARE
SOLD
OVERSEAS**

PUGET SOUND NAVY MAJOR INSTALLATIONS

NAVAL AIR STATION WHIDBEY ISLAND



NAVMAG INDIAN ISLAND



NAVAL STATION EVERETT



NAVAL BASE KITSAP



NORTHWEST NAVY ECONOMIC HIGHLIGHTS



78,549

The number of jobs, including 25,041 military*** and 20,974 civilian personnel directly employed and 32,534 additional jobs related to operations and maintenance, payroll, and other spending

\$303 MILLION

The annual amount in state/local taxes**** including \$152 million from payroll, \$149 million from operations and maintenance, and \$3 million from visitor spending

\$10.7 BILLION

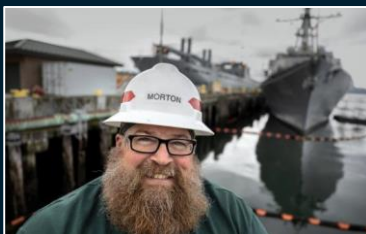
The total amount of economic activity that NRNW generated in the ROI

\$7.7 BILLION

Total industry output from payroll, operations and maintenance, and visitor spending

\$3.0 BILLION

Total direct annual payroll of personnel working at NRNW



KITSAP NAVY

ECONOMIC HIGHLIGHTS



\$4 BILLION ECONOMIC IMPACT

- \$2.1 billion: military/civilian payroll
- \$1.9 billion: additional spending



33,800 DAILY WORKERS

- 16,200 military personnel
- 17,600 civilian personnel
- 7,500 Defense contractors

*Most employees in Kitsap County by 17,500



\$129 MILLION IN STATE AND LOCAL TAX REVENUES

- \$89.2 million: payroll
- \$38.5 million: operations and maintenance
- \$1.6 million: visitor spending

FIVE LOCATIONS, ONE INSTALLATION



● BANGOR

● BREMERTON

● JACKSON PARK

● KEYPORT

● MANCHESTER



YESTERDAY, TODAY, & TOMORROW



2004

- 1 CVN
- 6 Trident SSBNs
- 1 SSN
- 400 USMC Security Personnel
- 2 R&D Operations
- Strategic Weapons Facility
- PSNS

TODAY

- 2 CVNs
- 8 Trident SSBNs
- 2 OHIO SSGNs
- 3 SEAWOLF Class SSNs
- 2-5 Decommissioning SSNs
- 3 R&D Operations
- Strategic Weapons Facility
- PSNS
- Coastal Riverine Squadron Det.
- 1,200 USMC Security Personnel
- Underwater Vehicle Detachment



MISSION & STRATEGIC IMPORTANCE

STRATEGIC FACILITIES

- 8 of 14 Strategic Missile Submarines
- 1 of 4 Naval Shipyards capable of repair to nuclear propulsion plants
- Only Pacific NIMITZ class carrier-capable dry dock
- Only West Coast OHIO Class Submarine capable dry docks in Bangor & Bremerton
- 1 of 2 Strategic Weapons Facilities
- Navy's Largest Fuel Depot in CONUS
- Navy's Pacific Heavyweight Torpedo Depot and only Lightweight Torpedo Depot

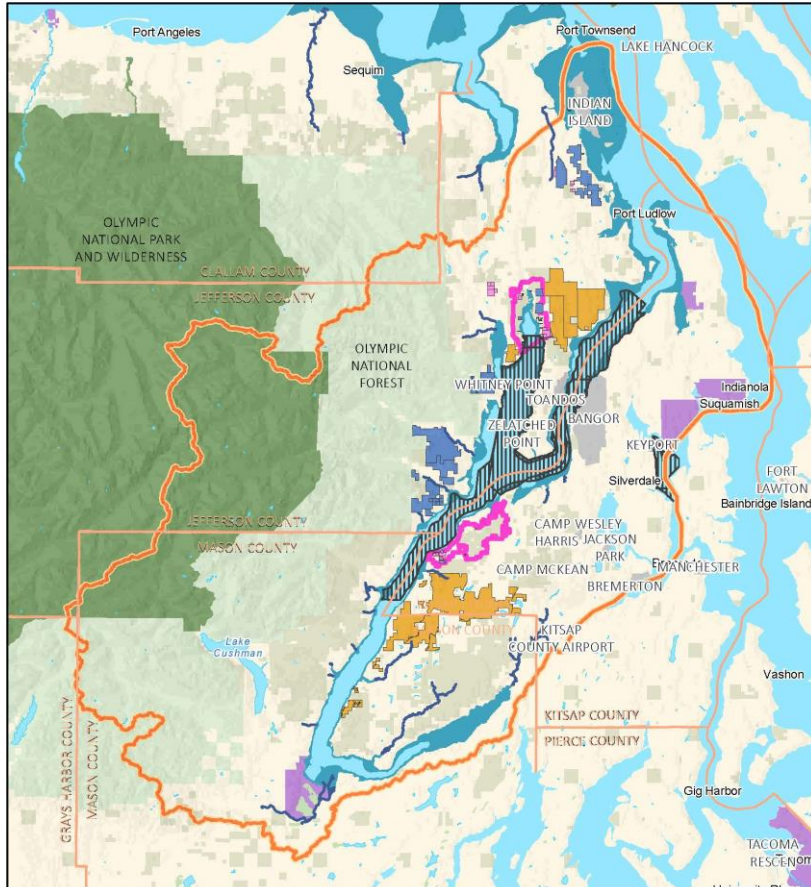
STRATEGIC WATERFRONT

- All Submarine Platform Types Homeported at Bangor
- Multiple Homeported Aircraft Carriers

UNIQUE FEATURES

- 77 miles of railroad
- USCG Transit Protection System
- Largest Marine Corps Security Force Battalion

READINESS & ENVIRONMENTAL PROTECTION INITIATIVE (REPI)



FY2018 REPI



OVER 11,500 ACRES PROTECTED FROM DEVELOPMENT IN PARTNERSHIP WITH ENCROACHMENT PROTECTIONS PARTNERS.

PROTECTS RIPARIAN CORRIDORS ALONG DOSEWALLIPS AND DUCKABUSH RIVERS

ADDITIONAL TRANSACTIONS IN PROGRESS- DEWATTO

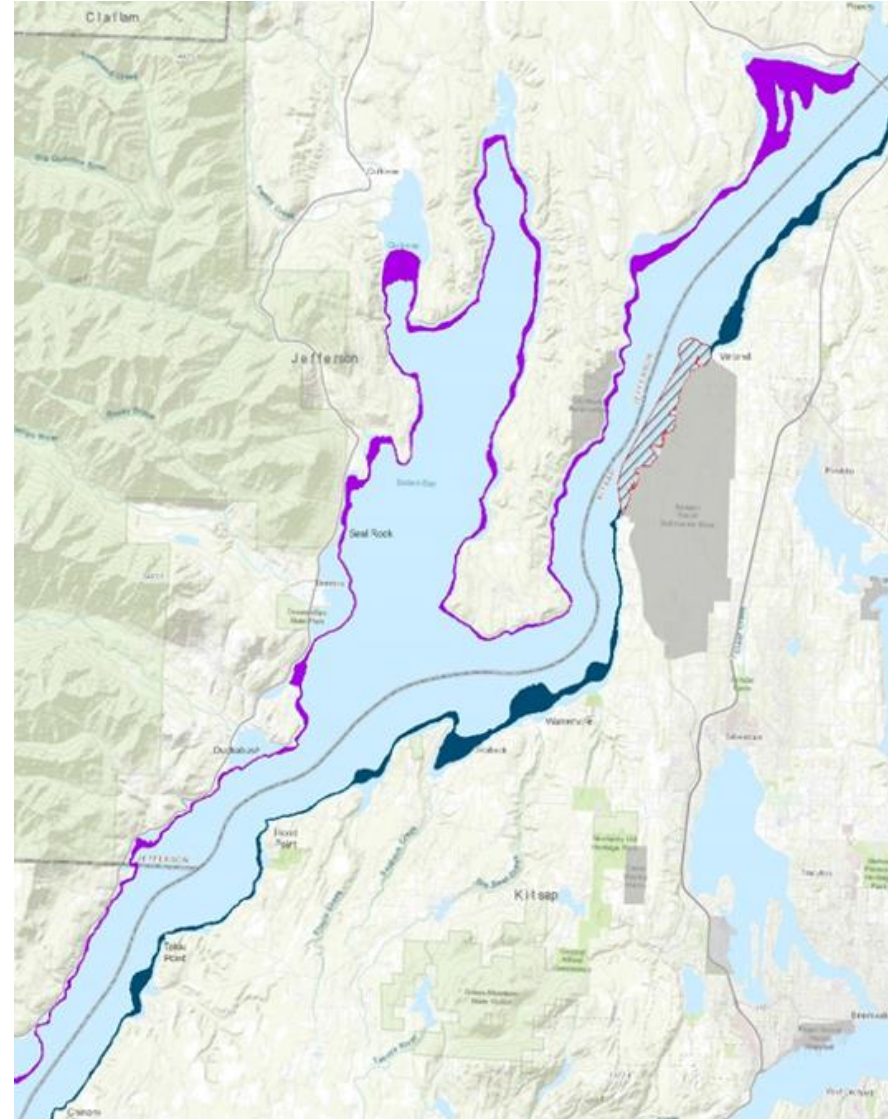
MAINTAINING ENVIRONMENTAL BENEFITS WHILE PROTECTING THE NAVY'S MISSION

FOREST LEGACY PARTNERING IN PROGRESS

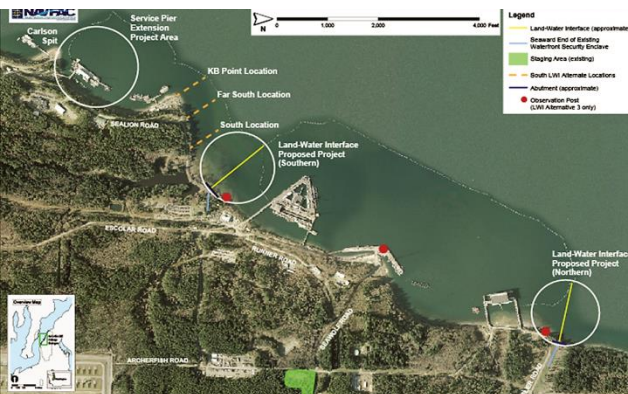
NAVY ENCROACHMENT PROTECTION HOOD CANAL CONSERVATION

BEDLANDS RESTRICTIVE EASEMENT

- NAVY ACQUIRED RESTRICTIVE EASEMENTS FOR 7,285 ACRES OF STATE-OWNED BEDLANDS (AQUATIC LANDS)
- 55-YEAR EASEMENT ON 100 MILES OF SHORELINE



NATIONAL ENVIRONMENTAL POLICY ACT (NEPA) MAJOR PROJECTS



BANGOR WATERFRONT IMPROVEMENTS

- Service Pier Extension (SPE)
- Transit Protection Pier (TPP)
- Land-Water Interface (LWI)



SHIPYARD MODERNIZATION

- Significant upcoming construction, including new dry docks and infrastructure modernization
- Projected \$2-5 billion investment



MANCHESTER TANK FARM REPLACEMENT

- Construction of new above-ground fuel storage tanks and the closure of underground storage tanks to improve fuel tank infrastructure.



COMMUNITY PARTNERSHIPS & SUPPORT



TOTAL VOLUNTEER HOURS

- 2018: 2,757
- 2019: >5,000



NAVAL SECURITY FORCES **FIRE & EMERGENCY SERVICES**



HARBOR PATROL UNIT



**EXPLOSIVE
ORDNANCE DISPOSAL**



MILITARY WORKING DOGS



**FIRE & EMERGENCY
SERVICES**

***1,698 EMERGENCY SERVICE CALLS IN FY 2018:**

- **ON-BASE – 1,402**
- **MUTUAL AID - 296**

HOMEPORT OF CHOICE



CONTACT US

Naval Base Kitsap
120 S Dewey St.
Bldg. 443
Bremerton, WA 98314

Public Affairs

Phone: (360) 627- 4056 / 4031
Email: pao.nbk.cnrnw@navy.mil
Web: www.cnlic.navy.mil/kitsap/



@kitsapnavy



@NavalBaseKitsap

