

Port of Pasco

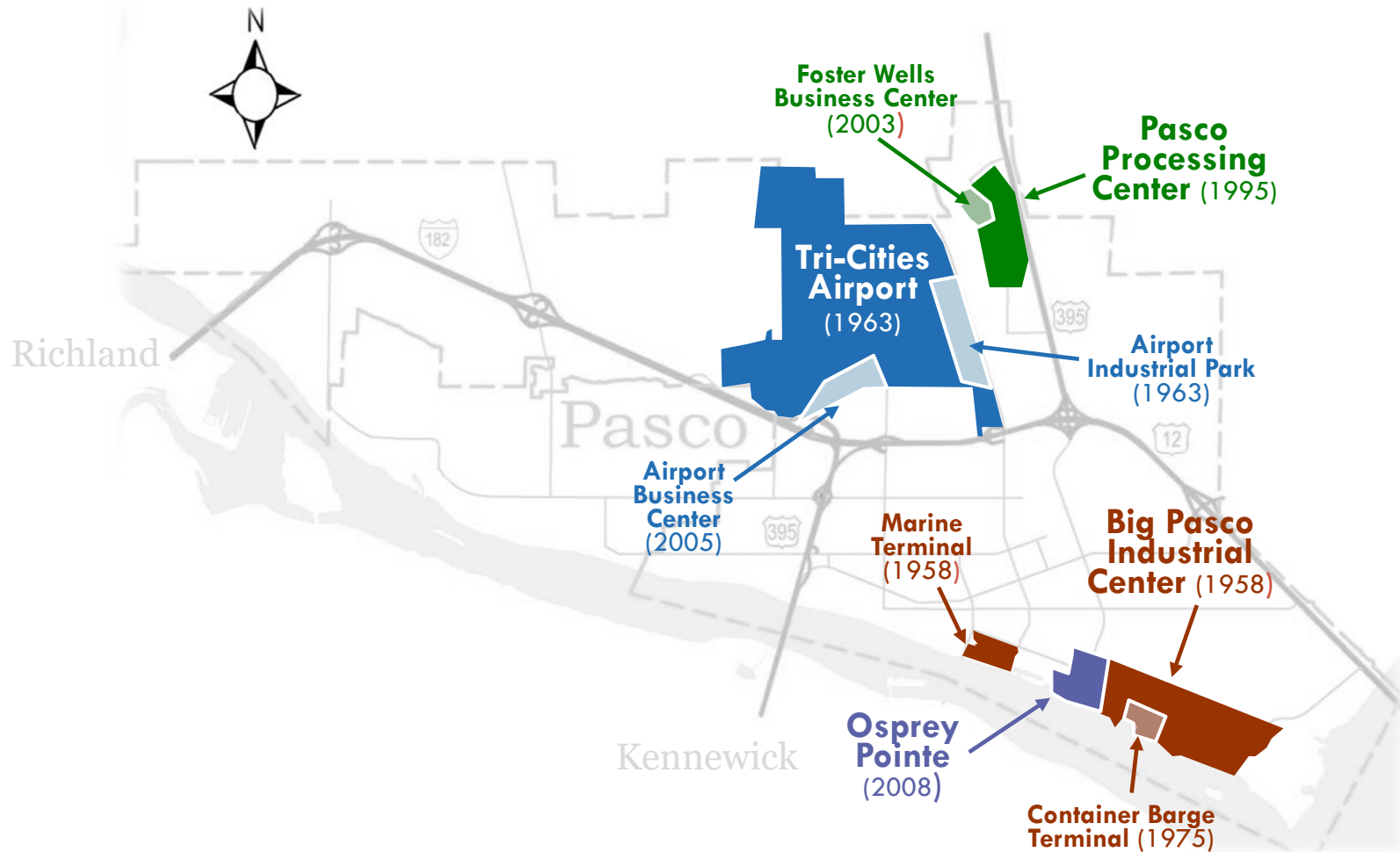
WEDA Spring '14 Conference



May 12, 2014

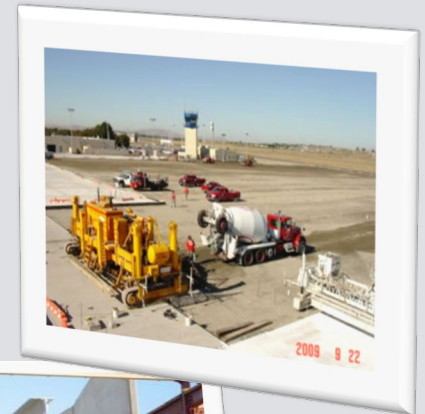
Port of Pasco Properties

1941 - Present



\$100 Million +

Investment in Capital Projects Improvements from 2005-2014



Existing Facility Development

BIG PASCO INDUSTRIAL CENTER & OSPREY POINTE



Existing Facility Development

BIG PASCO ACTIVITY



Existing Facility Development

OSPREY POINTE MASTER PLAN



Brownfield Property Revitalization

- CABLE BRIDGE SITE: CURRENT CONDITION



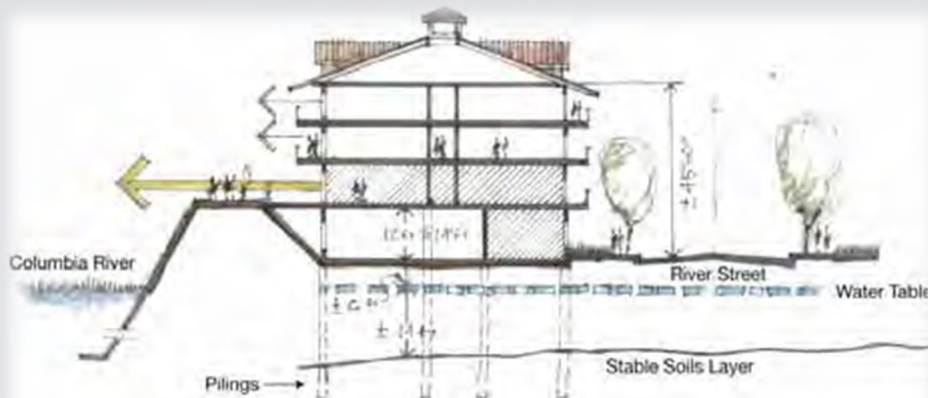
Brownfield Property Revitalization

- CABLE BRIDGE SITE: POSSIBLE LAND USE



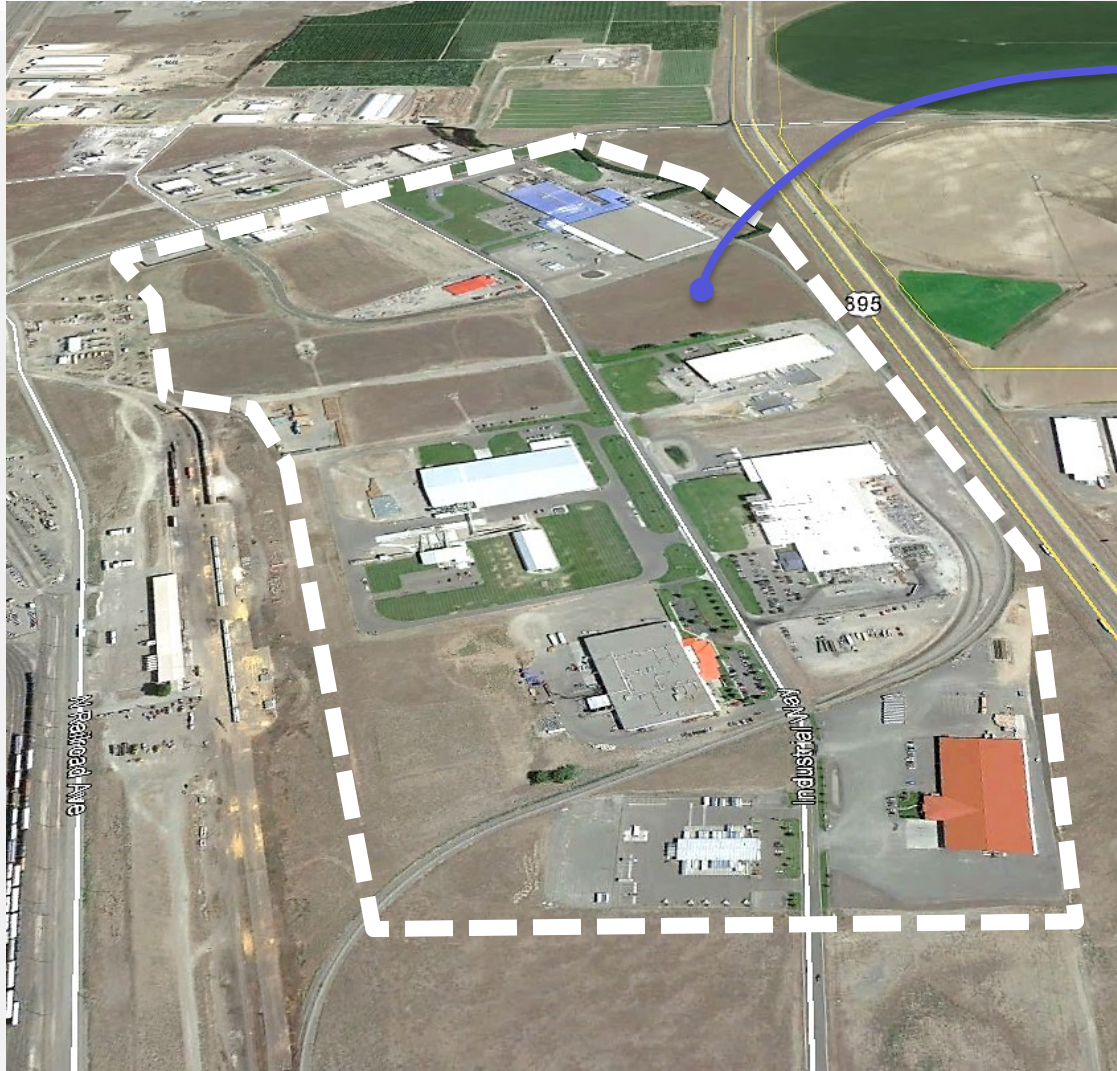
Brownfield Property Revitalization

- CABLE BRIDGE SITE: REDEVELOPMENT IDEAS



Greenfield Development

- PASCO PROCESSING CENTER



KENYON **ZERO** STORAGE

Joining . . .

PASCO
PROCESSING LLC

AmeriCold
LOGISTICS

syngenta

Budweiser

RESER'S
FINE FOODS

Twin City Foods, Inc.

OLD DOMINION
FREIGHT LINE

EASTERDAY
FARMS



Greenfield Development

- PASCO PROCESSING CENTER



Kenyon Zero

- Cold Storage
- 203,000 SF
- \$11M Plant+
- 17 Acres
- 20 FTEs



Economic Development



Strategic Vision

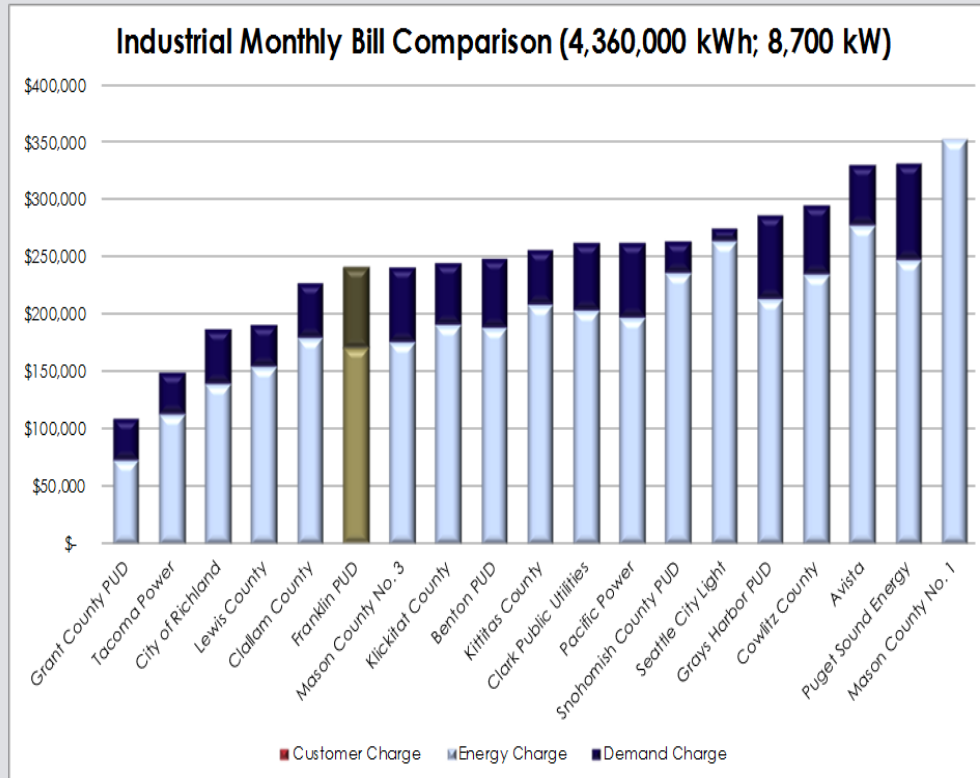
- What is community's highest priority – tax base or jobs?
- How will power rates, water availability, & land use affect new large industry?
- What other community goals will drive economic development?



Economic Development

Strategic Vision

- What is community's highest priority – tax base or jobs?
- How will power rates, water availability, & land use affect new large industry?
- What other community goals will drive economic development?



[a] For Utilities with Summer/Winter rates or Time of Use rates, a weighted average rate is used.

[b] For Utilities without Industrial Class rate schedules, Large General Service is used.



Economic Development

Tri-Cities Airport



Pasco Downtown



Columbia Basin College

Strategic Vision

- What is community's highest priority – tax base or jobs?
- How will power rates, water availability, & land use affect new large industry?
- What other community goals will drive economic development?



THANK YOU!



Economic Development & Transportation

Randy Hayden
Executive Director
Port of Pasco
509-547-3378
www.portofpasco.org

